



EVOTECH

Trentino

Seguici anche su





Motorcycle

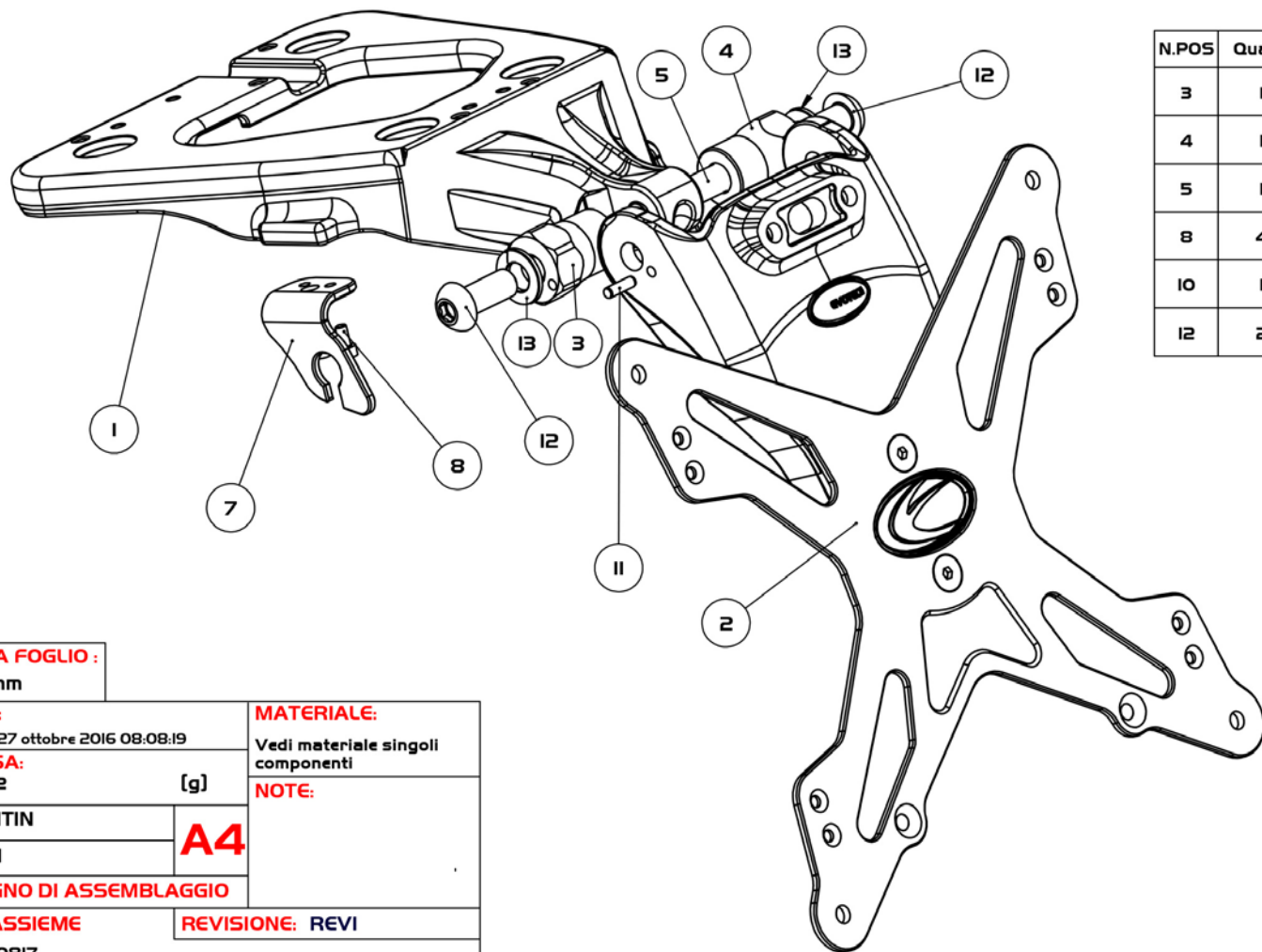
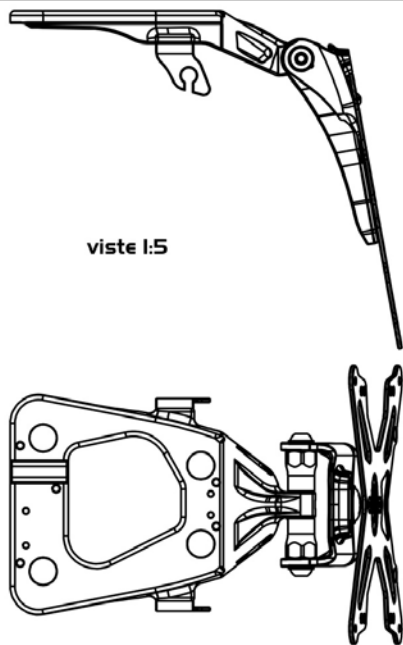
Ducati Monster 1200R - 2016

User Manual

License plate ESTR-0817



N° pos	COD.PARTE/KIT	DESCRIZIONE	Q.	MATERIALE
1	ESTR-0817-A	ESTR-0817-A	1	Al 6082-T6
2	EPR-000 GENERICO	EPR-006 kit placca portatarga	1	
3	Bs_AL_EV_M8_DI7-EI9_L26_F	Bs_AL_EV_M8_DI7-EI9_L26_F	1	Al 6026
4	Bs_AL_EV_M8_DI7-EI9_L26	Bs_AL_EV_M8_DI7-EI9_L26	1	Al 6026
5	GRANO ISO 4026 UNI 5923 DIN 913 M8x40pl.25_acciaio 45H	GRANO CEEP ISO 4026 M8x40pl.25_acciaio 45H	1	Acciaio C45K
6	SFL-01-B	SFL-01-B supporto frecce aftermarket sinistro	1	Al 5754
7	SFR-01-B	SFR-01-B supporto frecce aftermarket destro	1	Al 5754
8	VITE ISO 4762 UNI 5931 DIN 912-M3x6p0.7_inox A2	VITE ISO 4762-M3x6p0.7_inox A2	4	Acciaio inox A2-70 AISI 304
9	spina cil. ISO 2338-UNI I707 d1,5 LI6_inox Al	spina cil. ISO 2338-d1,5 LI6_inox Al	1	Acciaio inox Al DIN 1.4305 (X8CrNiSi8-9)
10	ISO 4027 UNI 5927 DIN 914 M3x8p0.5_A2	GRANO CEEC M3x8p0.5_A2	1	Acciaio inox A2-70 AISI 304
11	spina cil. ISO 2338-UNI I707 d3 LI0_inox Al	spina cil. ISO 2388-UNI I707 d3 LI0_inox Al	1	Acciaio inox Al DIN 1.4305 (X8CrNiSi8-9)
12	VITE ISO-7380-M8x20pl.25_A2	VITE TBCE ISO-7380-M8x20pl.25_inox A2	2	Acciaio inox A2-70 AISI 304
13	ISO 7089 UNI 6592 DIN I25-A_A2-M8	ROSETTA PIANA M8-DI6-A2	2	Acciaio inox A2-70 AISI 304



N.POS	Quant.	Coppia di serraggio consigliata (Nm)
3	1	12
4	1	12
5	1	15
8	4	1
10	1	0,7
12	2	18

EVOTECH

EVOTECH S.r.l.
via da Borgo 14
38059 Villagnedo -TN- ITALY
P.IVA 01851220226
Tel. 0461/780184
Fax 0461/782707

PROGETTISTA:
MIRKO TRENTIN
e-mail riferimento:
info@evotech-rc.it

SCALA FOGLIO:
1:2 mm

DATA:
giovedì 27 ottobre 2016 08:08:19
MASSA:
458.32 [g]

MATERIALE:
Vedi materiale singoli componenti

NOTE:

Per le **COPPIE DI SERRAGGIO** non direttamente specificate fare riferimento alla tabella generale disponibile sulla home page del sito www.evotech-rc.it nella sezione download.

VERIFICATORE: MIRKO TRENTIN
APPROVATORE: MATTEO TISI

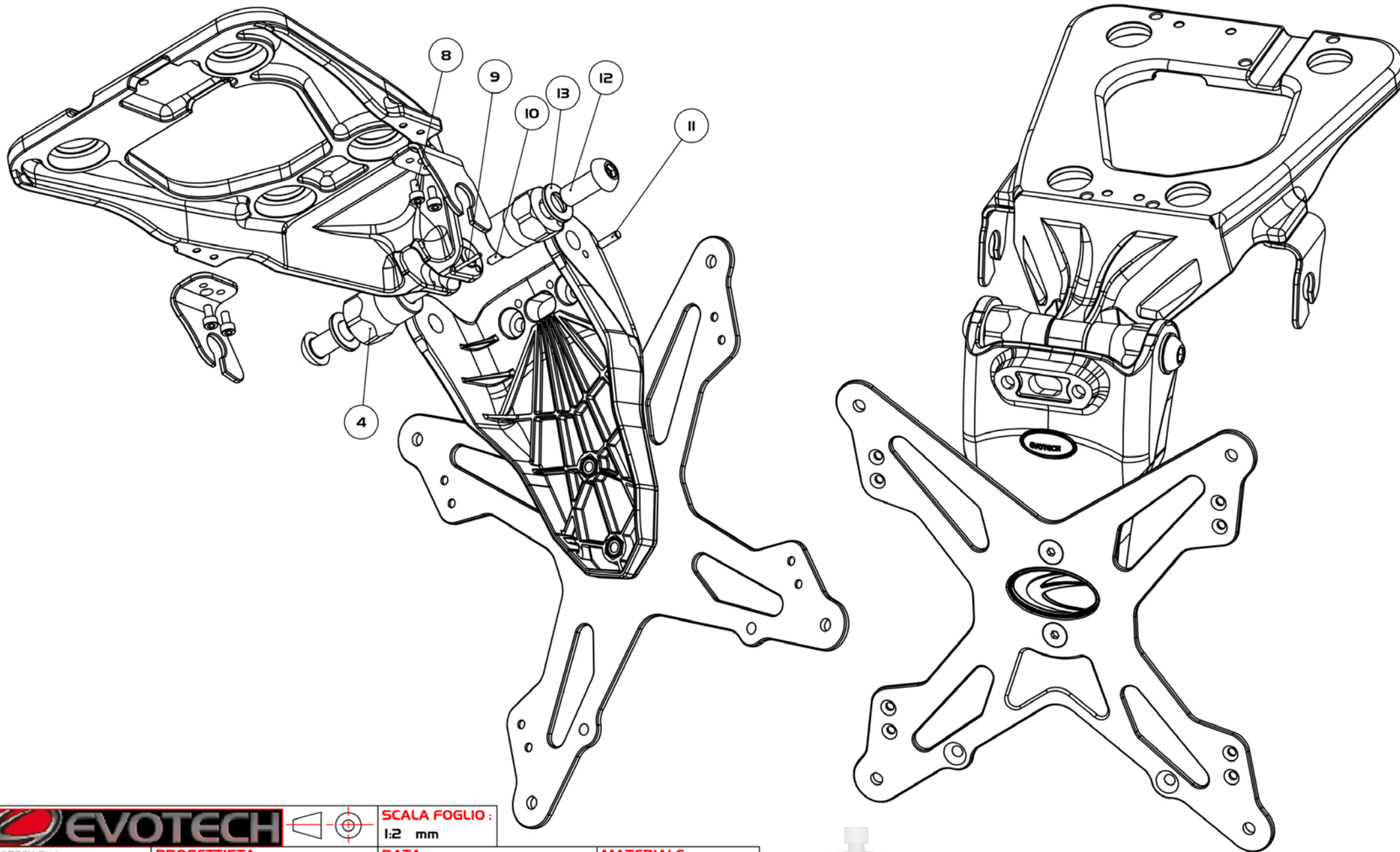
A4

DISEGNO DI ASSEMBLAGGIO

DESCRIZIONE: ESTR-0817 kit portatarga
N° FOGLIO: Foglioli **DI:** 3

COD.ASSIEME: ESTR-0817

REVISIONE: REVI



EVOTECH S.r.l.
 via da Borgo 14
 38059 Villa Agnedo -TN- ITALY
 P.IVA 01851220226
 Tel. 0461/780184
 Fax 0461/782707

PROGETTISTA:
 TRENTIN MIRKO
e-mail riferimento:
 info@evotech-rc.it

SCALA FOGLIO:
 1:2 mm

DATA:
 giovedì 27 ottobre 2016 08:08:19
MASSA:
 458.32 [g]

MATERIALE:
 Vedi materiale singoli componenti
NOTE:

Per le COPPIE DI SERRAGGIO non direttamente specificate fare riferimento alla tabella generale disponibile sulla home page del sito www.evotech-rc.it nella sezione download.

VERIFICATORE: MIRKO TRENTIN
APPROVATORE: MATTEO TISI

A4

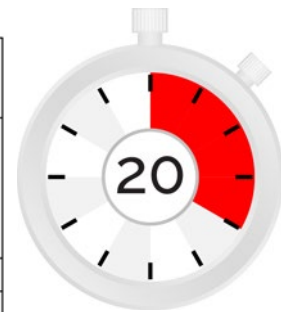
DISEGNO DI ASSEMBLAGGIO

DESCRIZIONE:
 ESTR-0817 kit portatarga

N° FOGLIO: Foglio3 **DI:** 3

COD.ASSIEME:
 ESTR-0817

REVISIONE: REVI



Livello difficoltà: MEDIO
 Difficulty level: MEDIUM
 Schwierigkeitsgrad: MITTEL
 Nivei de dificultad: MEDIO
 Niveau de difficulté: MOYEN



Tail Tidy ESTR-0817

Warning: Before proceeding with the assembling of the product, Evotech specifies that the user is liable for any incorrect installation of the product or its improper use. We suggest the assembling of the kit to qualified staff.

Keep this user guide as a reference for the future.



1. Rotate the key clockwise to unblock the seat.

2. Remove the seat.

3. At this stage the undertail will be as showed in the picture.

1.



2.



3.





4. Remove now the screws of your undertail. First the one near the tank.

5. Than remove the one placed under the passenger's seat.

6. Stand under your bike and remove the last two screws.

4.



5.



6.





7. Remove the undertail.

8. Be care don't touch the others cables.

Connectors of the license plate holder are under it on the left.

2 - Indicators (gray).

1 - License plate light (white).

1- Rear light (white, don't remove it).

9. After you removed connectors, you can screw down the four screws of the oem tail tidy.

7.



8.



9.





10. Remove the 4 fixing screws of the original tail tidy.

WARNING!

Removing the last screw the OEM tail tidy may fall.

11/12. Once you removed the undertail, remove the rubber spacers.

10.



11.



12.





WARNING!

Remember to assemble the number plate on your bike before using it.

13. Now the bike's tail is ready and you can fit the new bracket of evotech kit ESTR-0817.

14/15. Place the rubber spacers you have just removed on the new evotech kit.

13.



14.



15.





16/17. Image of how the new tail tidy kit is made of.

18. Assemble and fix the new license plate holder with the four screws you removed before from the original kit.

16.



17.



18.





19. Remake the wiring.

20. Warning: the images of the tail tidy could be different from yours, don't worry.

21. You will find a cylindrical pin in the new kit. Screw it as showed in the picture.

WARNING!
DON'T EXCEED WITH THE
TIGHTENING OF THE
CYLINDRICAL PIN!

19.



20.



21.





22. WARNING!

An extreme fastening can create a hole on the opposite side as you can see in the photo. Be care about this!

23. As you can see from the picture, you need the pin only to centrare the hexagonal black spacer included in the screws kit. Evotech is not liable for any damages caused by a too heavy tightening of it.

24. The thin cylindrical pin included in the kit is suitable to hide the reflector's cable.

22.



Hole caused by a high clamp.

23.



24.





25. Reflector's cable and use the pin to block as illustrated.

26. Bring the two hexagonal spacers and assemble them as showed in the first pages.

27. Fix the plate's support EPR-000 through the screws included in the kit. Be care about the cylindrical pin for the degrees control.

25.



26.



27.

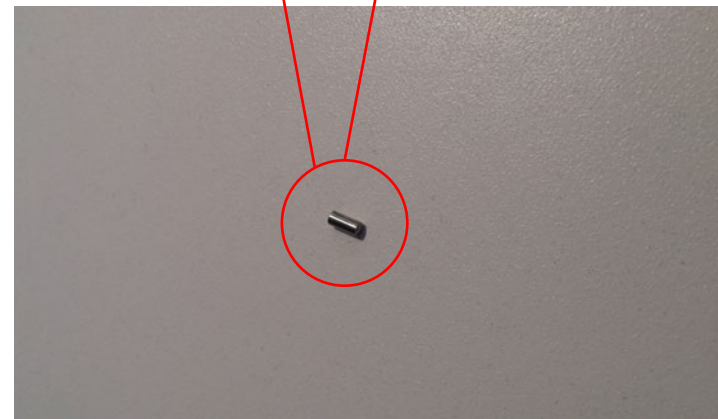




28. The cylindrical pin must be placed inside the hole you find on the left of EPR-000 and verify to match it with the hole on the new ESTR-0317 bracket.

The cylindrical pin will allow you to get a 30° angle to the vertical line of the ground-level, in accordance with the law.

28.





29/30. Reassemble now the undertail using the same screws. Remember to check all lighting devices work.

31. Now your new kit ESTR-0817 is ready.

29.



30.



31.





Illustrative photos of the tail tidy.





Illustrative photos of the tail tidy.





Optional NOT included:

- Support Reflector ELT-013.
- Reflector ELT-002.
- Tail tidy light ELT-001.
- Indicator F-01 or F-04.

